

# CBA F35 LWD VISION RT 500TVD

ARC6A-AA  
SON675

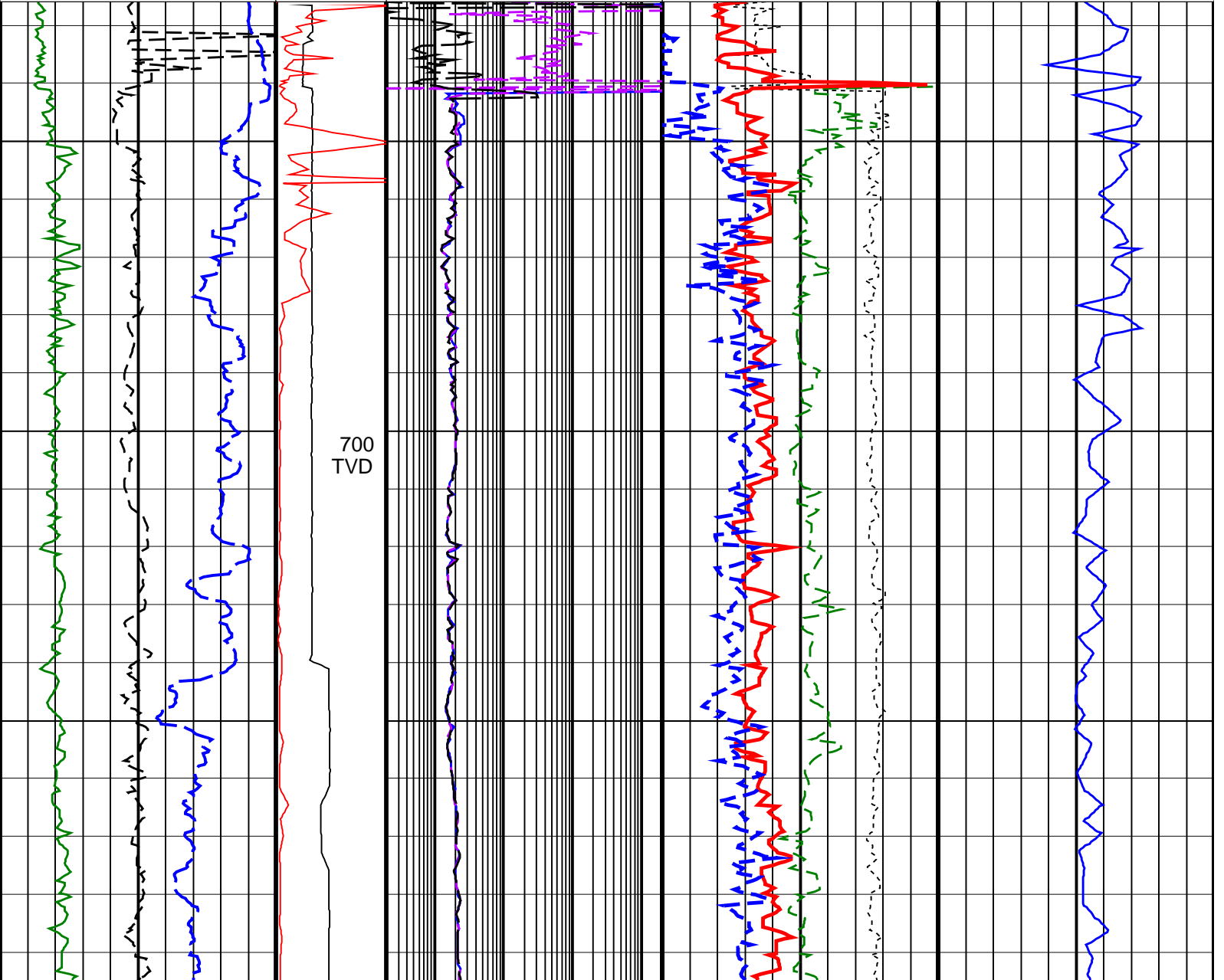
Id14\_0c\_17  
Id14\_0c\_17

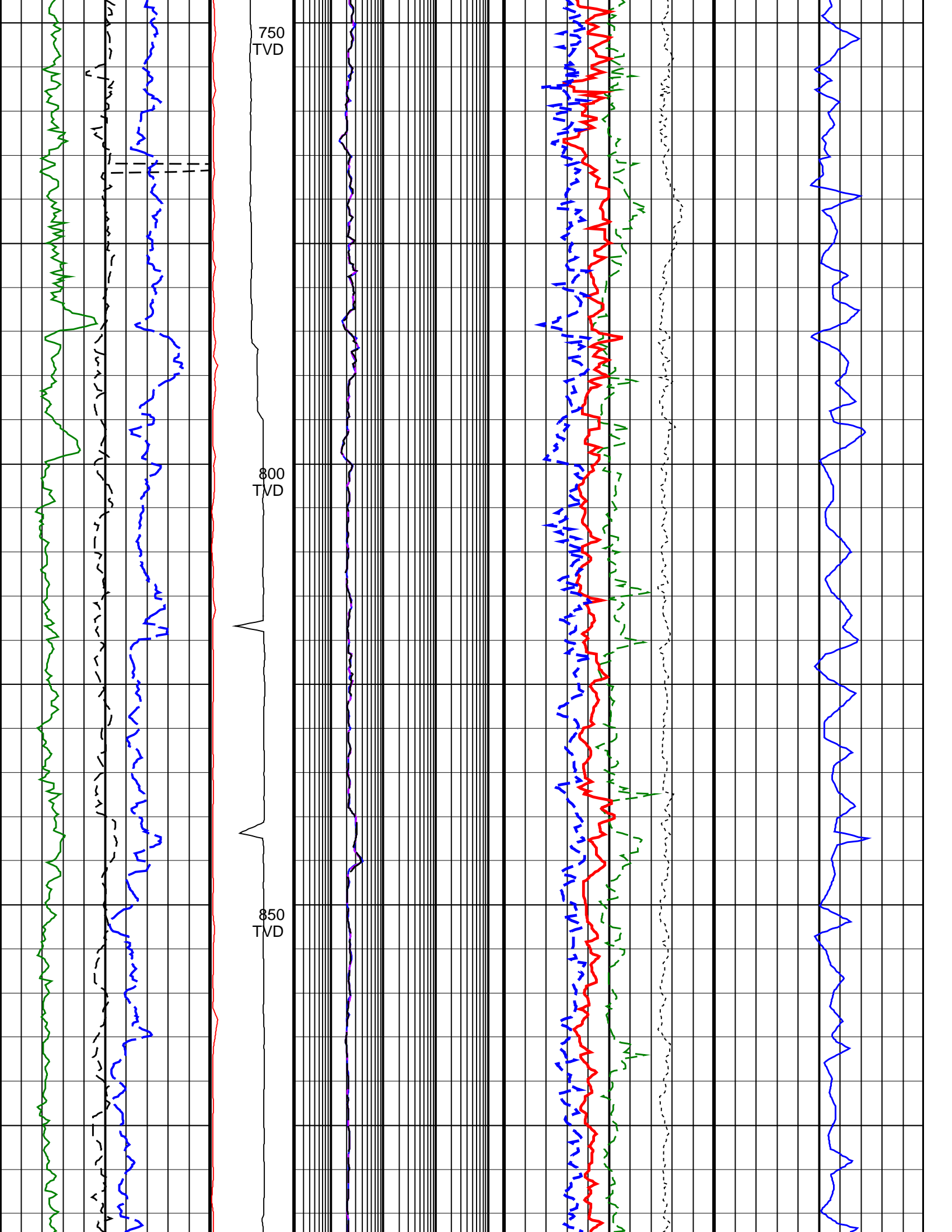
MWD\_10  
ADN

Id14\_0c\_17  
Id14\_0c\_17

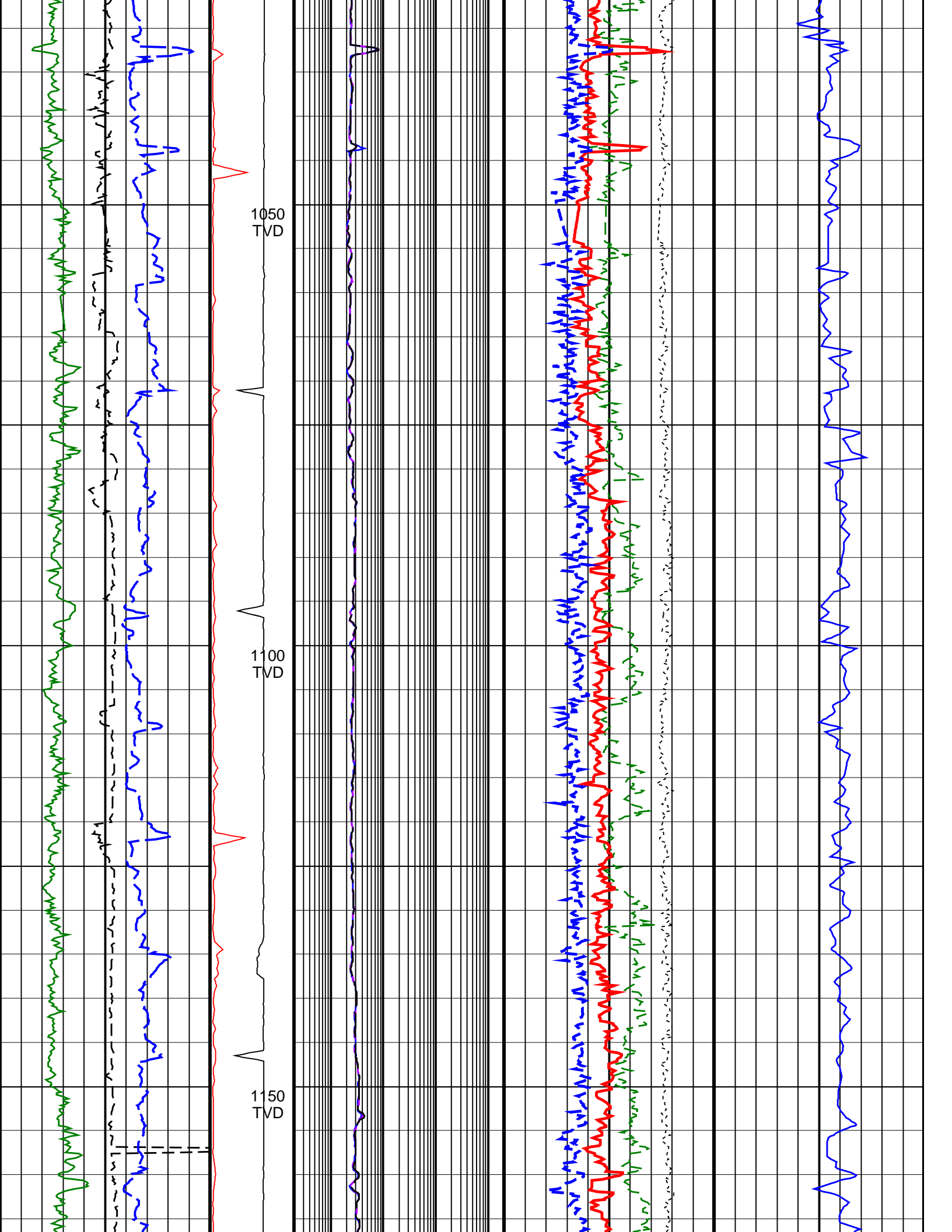
Format: VISION SERVICE RT 500TVD      Vertical Scale: 1:500      Graphics File Created: 10-Sep-2009 05:00

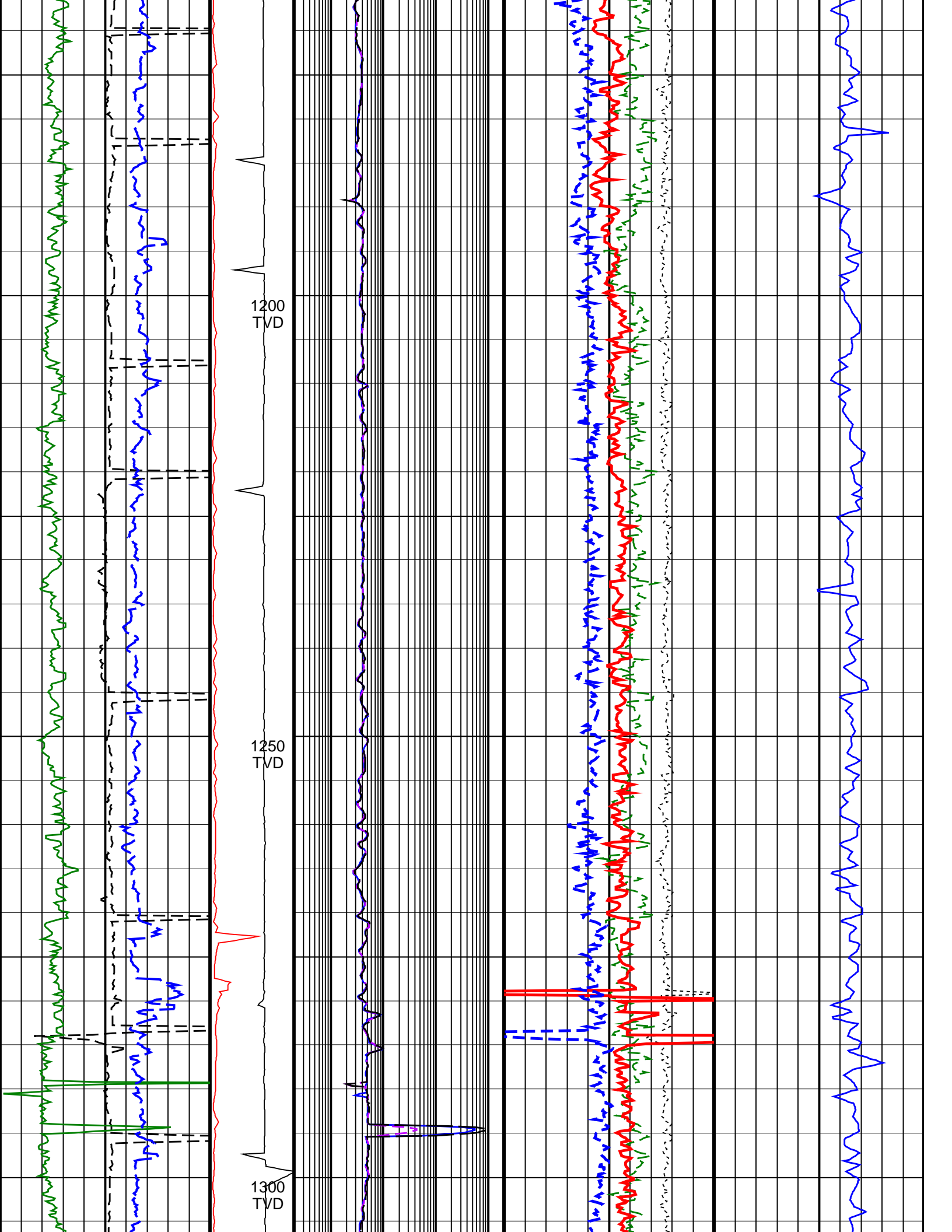
				Thermal Neutron Porosity, Real-Time (TNPH_ADN_RT) 0.45 (V/V)      -0.15	
ARC Gamma Ray, Real-Time (ARC_GR_RT) 0 (GAPI)      200		ARC BHCorr Phase-Shift Resistivity 40-in. at 2 MHz, Real-Time (P40H_RT) 0.2 (OHMM)      2000		Bulk Density, Bottom, Real-Time Computed Downhole (ROBB_DH_RT) 1.85 (G/C3)      2.85	
Average Borehole Diameter, Real-Time (ADIA_ADN_RT) 6 (IN)      16		MWD Collar RPM (CRPM_RT) (RPM) 0      250		ARC BHCorr Phase-Shift Resistivity 28-in. at 2 MHz, Real-Time (P28H_RT) 0.2 (OHMM)      2000	
ROP*5 (ROP5) (M/HR) 200      0		PKPK_RPM (Stick_RT) (RPM) 0      250		ARC BHCorr Phase-Shift Resistivity 16-in. at 2 MHz, Real-Time (P16H_RT) 0.2 (OHMM)      2000	
				Bulk Density Correction, Bottom, Real-Time Computed Downhole (DRHB_DH_RT) -0.75 (G/C3)      0.25	
				Delta-T Compressional, Real-Time (DTCO_RT) 600 (US/M)      100	

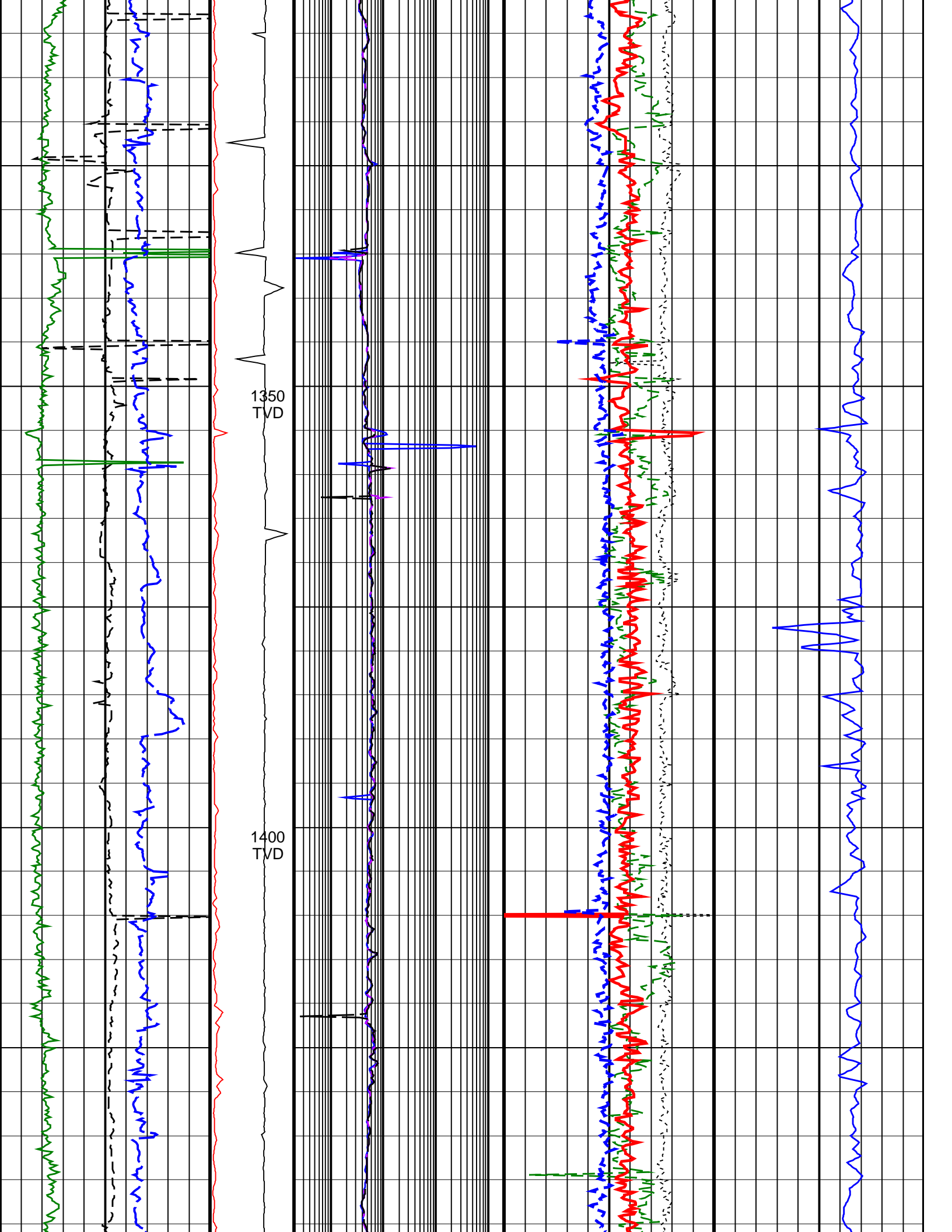


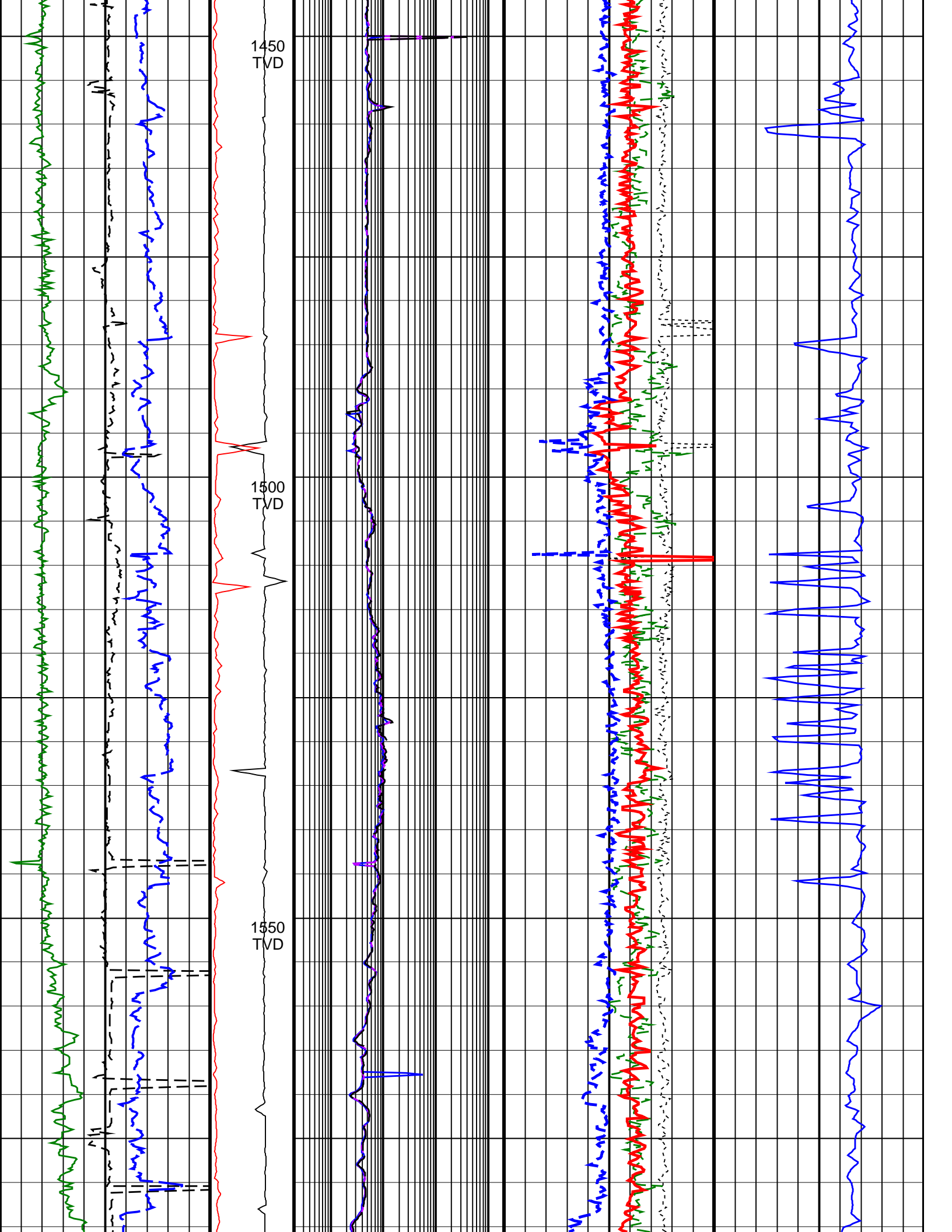


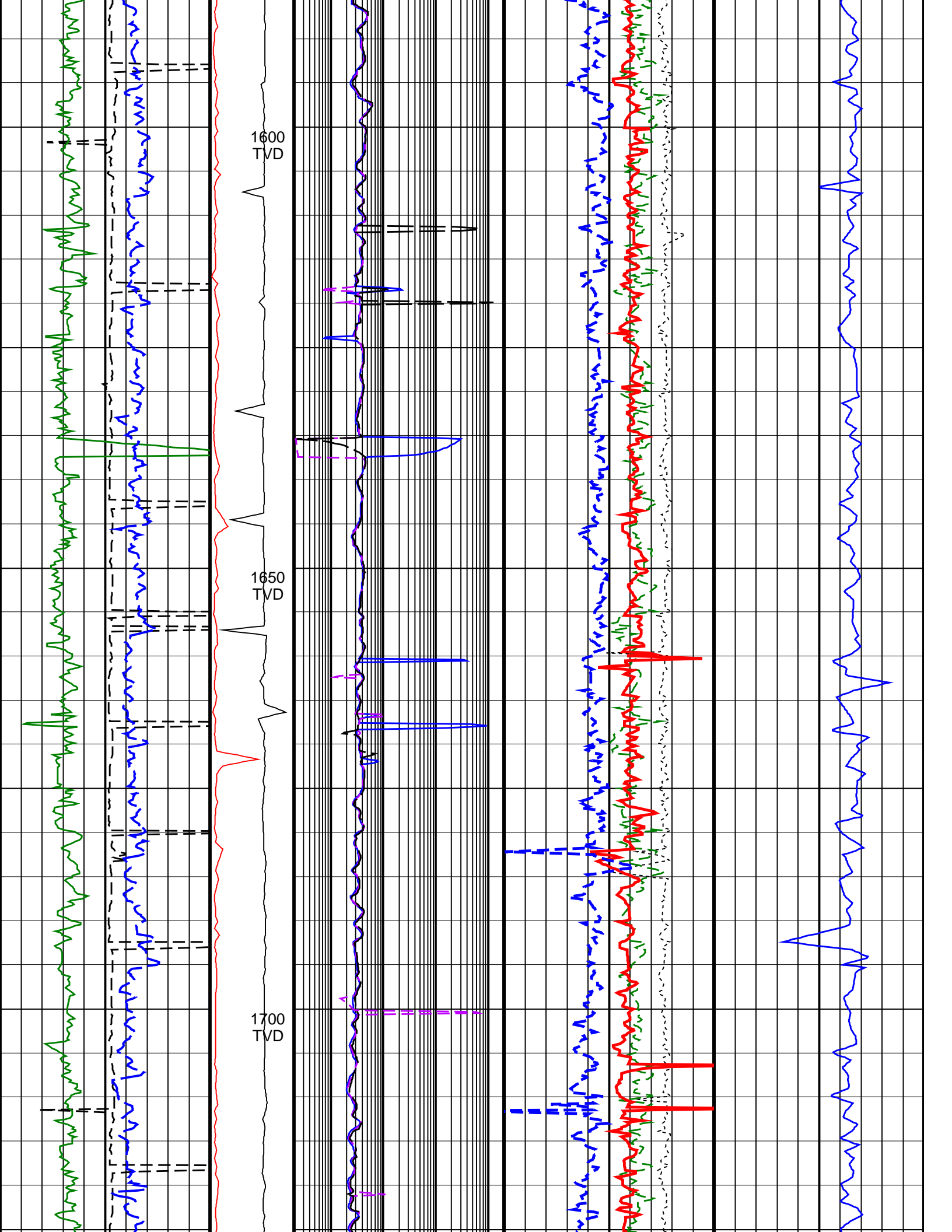




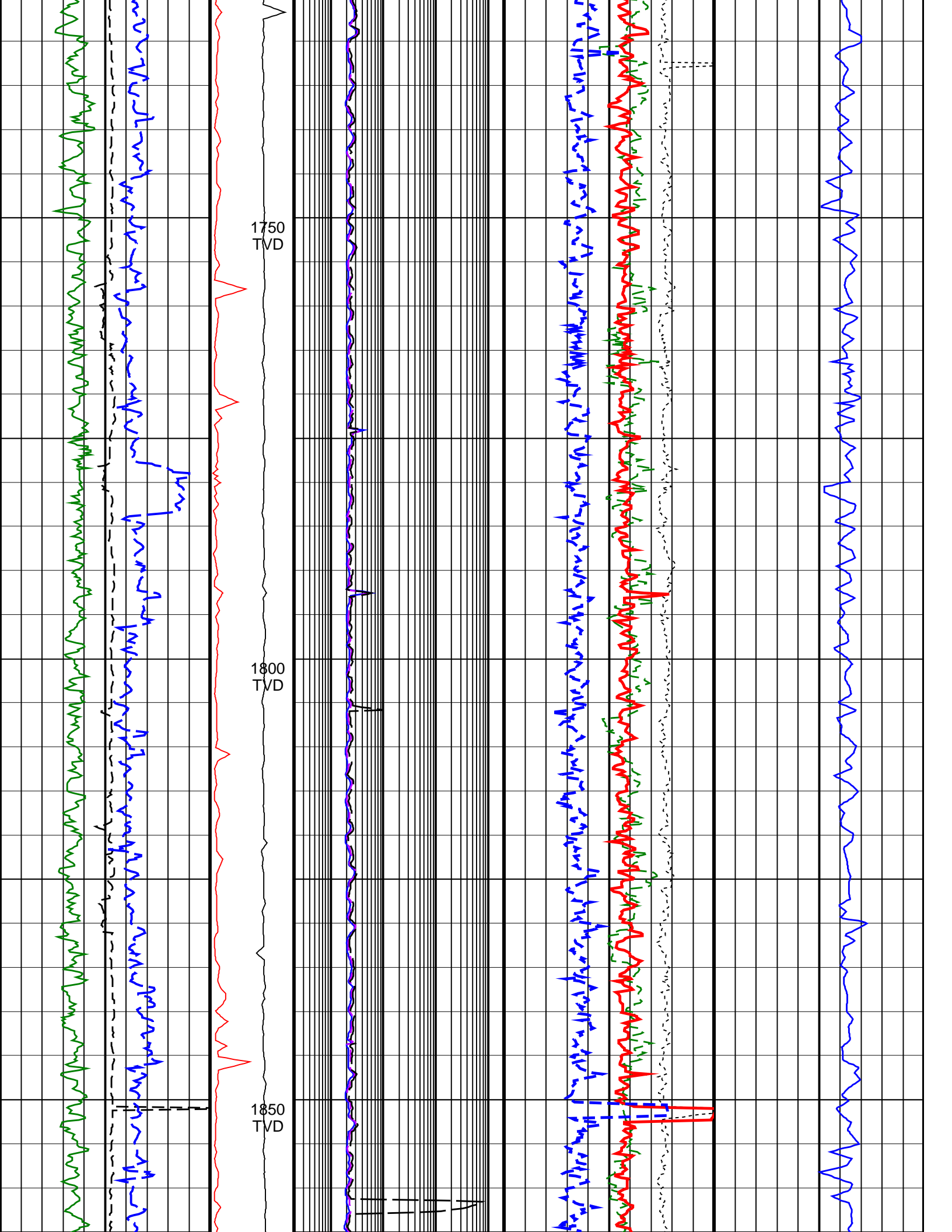




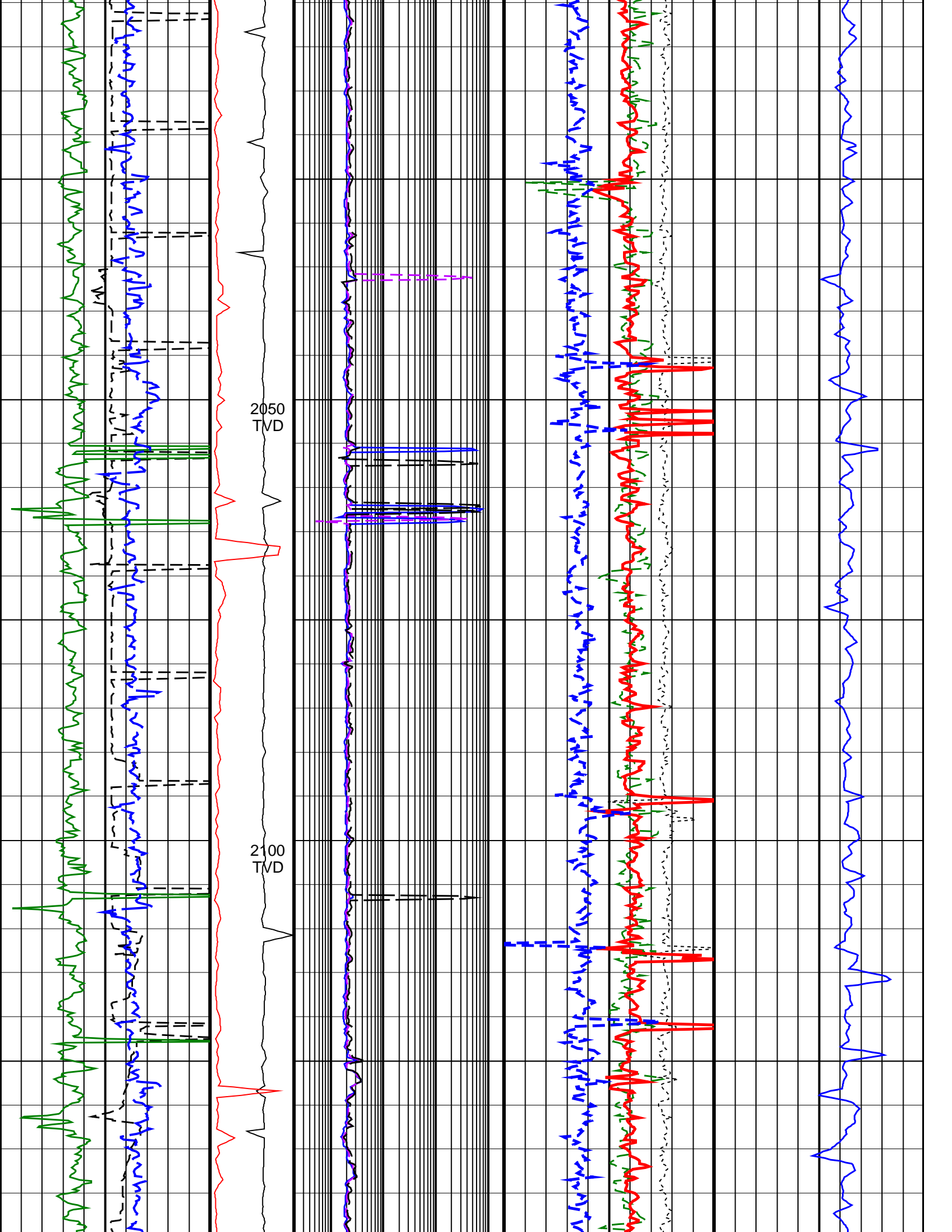


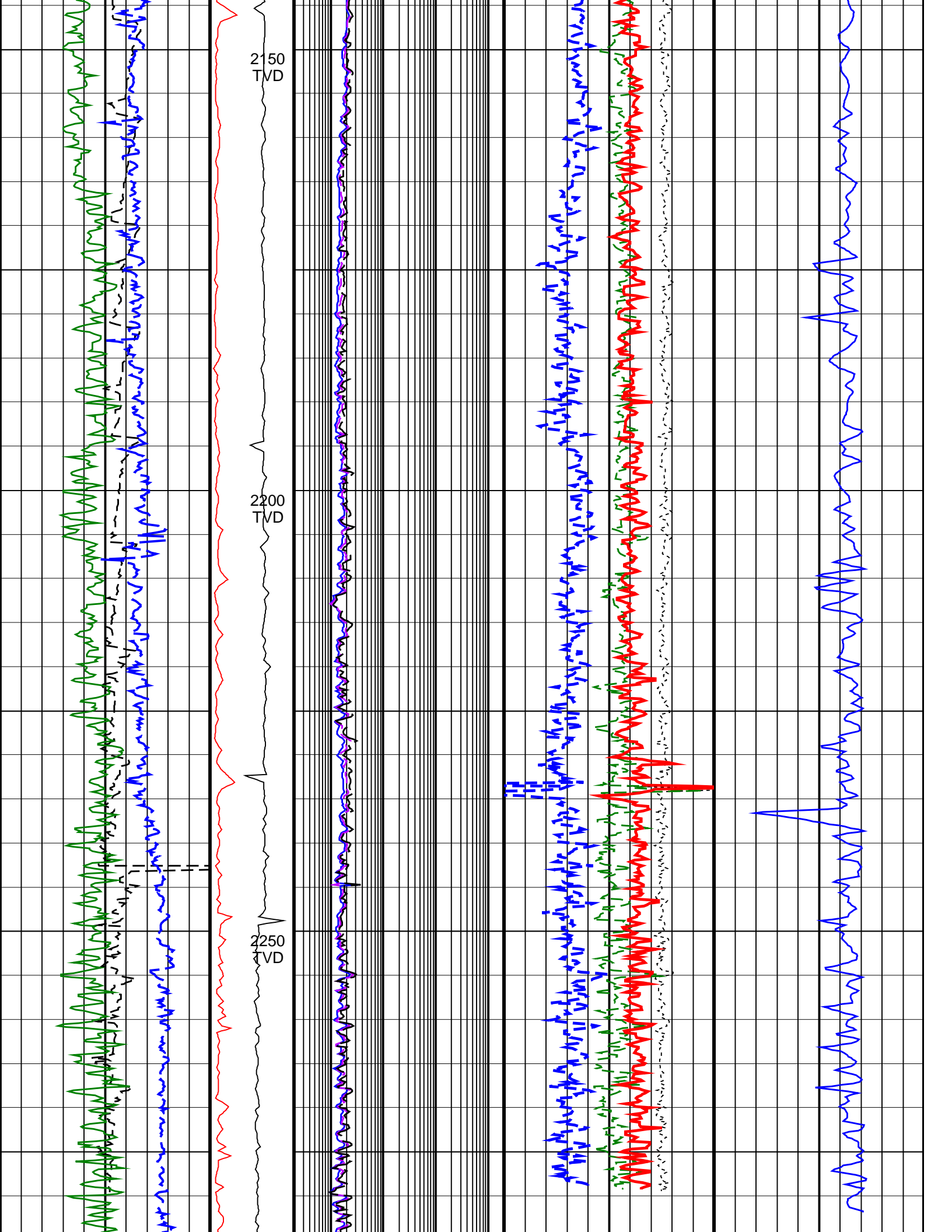












2150  
TVD

2200  
TVD

2250  
TVD

<u>ROP*5 (ROP5)</u> 200 (M/HR) 0	<b>PKPK_RPM</b> <b>(Stick_RT)</b> <b>(RPM)</b> 0 250	<b>ARC BHCorr Phase-Shift</b> <b>Resistivity 16-in. at 2 MHz,</b> <b>Real-Time (P16H_RT)</b> 0.2 (OHMM) 2000	<b>Bulk Density Correction,</b> <b>Bottom, Real-Time Computed</b> <b>Downhole (DRHB_DH_RT)</b> -0.75 (G/C3) 0.25	<b>Delta-T Compressional,</b> <b>Real-Time (DTCO_RT)</b> 600 (US/M) 100
<b>Average Borehole Diameter,</b> <b>Real-Time (ADIA_ADN_RT)</b> 6 (IN) 16	<b>MWD Collar</b> <b>RPM</b> <b>(CRPM_RT)</b> <b>(RPM)</b> 0 250	<b>ARC BHCorr Phase-Shift</b> <b>Resistivity 28-in. at 2 MHz,</b> <b>Real-Time (P28H_RT)</b> 0.2 (OHMM) 2000	<b>Photoelectric Factor, Bottom,</b> <b>Real-Time (PEB_RT)</b> 0 (----) 10	
<b>ARC Gamma Ray, Real-Time</b> <b>(ARC_GR_RT)</b> 0 (GAPI) 200		<b>ARC BHCorr Phase-Shift</b> <b>Resistivity 40-in. at 2 MHz,</b> <b>Real-Time (P40H_RT)</b> 0.2 (OHMM) 2000	<b>Bulk Density, Bottom,</b> <b>Real-Time Computed</b> <b>Downhole (ROBB_DH_RT)</b> 1.85 (G/C3) 2.85	
			<b>Thermal Neutron Porosity,</b> <b>Real-Time (TNPH_ADN_RT)</b> 0.45 (V/V) -0.15	

**IDEAL Version: ID14\_0C\_17**  
IDF

ARC6A-AA	Id14_0c_17	MWD_10	Id14_0c_17
SON675	Id14_0c_17	ADN	Id14_0c_17